



CARATTERISTICHE ELETTRICHE / Electric characteristics

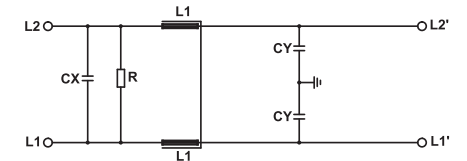
Tensione Nominale - <i>Nominal Voltage</i>	0/250 V_{ac} - 50/60 Hz
Tensione di prova fase/fase - <i>Phase to phase test voltage</i>	1450 V_{dc} (2 s)
Tensione di prova fase/terra - <i>Phase to ground test voltage</i>	2150 V (2 s)
Categoria climatica - <i>Climatic class</i>	-25 / +85 °C



FIN33	Corrente nominale a 40°C (A) <i>Nominal current at 40°C (A)</i>	C _x (μF)	L ₁ (mH)	C _y (nF)	Pot. diss. (W) <i>Power loss (W)</i>
.003.F	3	0,082	1,7	4,7	1,5
.006.F	6	0,082	1,7	4,7	2,1
.010.F	10	0,082	1,7	4,7	2,8
.020.F	20	0,2	0,8	4,7	3,8
.040.V	40	0,2	0,7	4,7	4,5
.050.V	50	0,2	0,6	4,7	5,5
.075.V	75	0,2	0,6	4,7	7
.100.V	100	0,2	0,4	4,7	10

SCHEMA ELETTRICO

Electric diagram



Rete - *Line*

Carico - *Load*

Corrente di fuga a 230 V fase verso terra a 50 Hz / 40°C
Leakage current at 230 V phase to ground- 50 Hz / 40°C

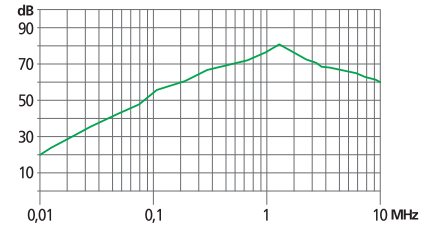
< 1mA

DIMENSIONI MECCANICHE (mm) / Mechanical dimensions (mm)

MODELLO <i>Model</i>	A	B	H	N	F	L	I	V	d	Peso Kg <i>Weight Kg</i>	Custodia <i>Case</i>
FIN33.003.F	27,6	45,5	72	—	5	60	51	14	6,5	0,13	1
FIN33.006.F	27,6	45,5	72	—	5	60	51	14	6,5	0,13	1
FIN33.010.F	27,6	45,5	72	—	5	60	51	14	6,5	0,2	1
FIN33.020.F	39	51,8	84	—	5	74	65	15	6,5	0,18	2
FIN33.040.V	40	86,6	107	96	6X4	50/55	100	20	M5	0,18	3
FIN33.050.V	50	100	125	115	6X4	120	180	50	M8	0,30	3
FIN33.075.V	50	100	125	115	6X4	120	180	50	M8	0,30	3
FIN33.100.V	70	120	150	135	6X4	120	180	50	M8	0,30	3

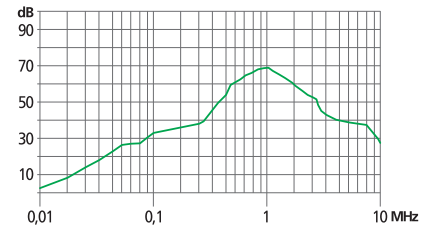
ATTENUAZIONE DI MODO COMUNE

Common Mode Attenuation



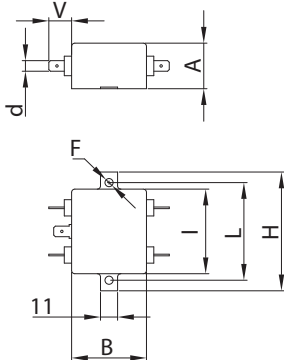
ATTENUAZIONE DI MODO DIFFERENZIALE

Differential Mode Attenuation



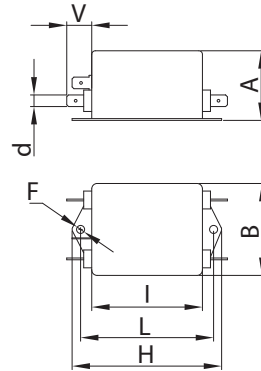
CUSTODIA 1

Case 1



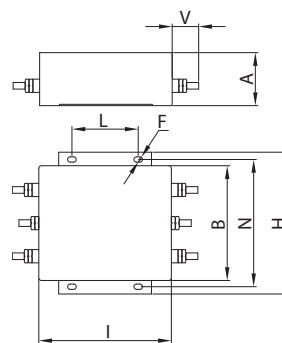
CUSTODIA 2

Case 2



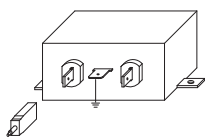
CUSTODIA 3

Case 3



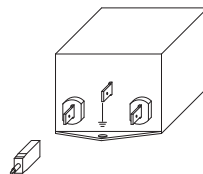
ASSEMBLAGGIO CUSTODIA 1

Case 1 Assembling



ASSEMBLAGGIO CUSTODIA 2

Case 2 Assembling



ASSEMBLAGGIO CUSTODIA 3

Case 3 Assembling

